



Osciladores com Terminais

HO-23C / 26C Series



This type of oscillator is a half size tristate Enable/Disable control. The metal package with pin #7 case ground acts as shielding to minimize EMI radiation.

FEATURES

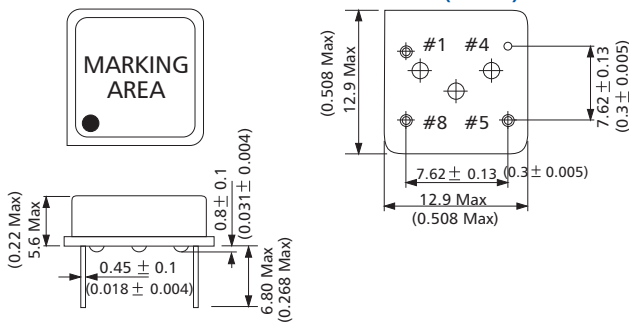
- Tri-State Enable/Disable
- 8 Pin Half size
- Industry Standard
- Wide Frequency Range
- Low Cost
- Resistance Weld Package

Electrical Specifications

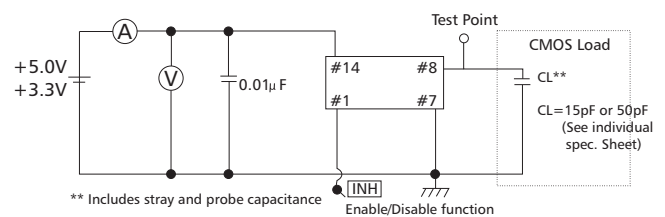
Parameter	Symb	Condition	HO-23C	HO-26C
Parameter Frequency Range	Fo		0.5MHz~150.00MHz	
Frequency Stability*		All Condition*	±25PPM, ±50PPM, ±100PPM	
Operating Temperature Range	TOPR		0°C ~70°C (-40°C ~+85°C option)	
Storage Temperature Range	TSTG		-55°C ~+125°C	
Power supply Voltage	VDD		5.0V+/-10%	3.3V+/-10%
Aging(First Year)		25°C ± 3°C	±5PPM	
Supply Current	IDD	0.5MHz to 23.999MHz	20mA Max	15mA Max
		24.000MHz to 49.999MHz	30mA Max	20mA Max
		50.000MHz to 69.999MHz	40mA Max	30mA Max
		70.000MHz to 150.000MH	60mA Max	45mA Max
Output Symmetry	Sym	1/2 VDD	40/60%(45/55% Option)	
Rise Time	Tr	10%VDD~90% VDD	10 ns Max	8 ns Max
Fall Time	Tf	90%VDD~10% VDD	10 ns Max	8 ns Max
Output Voltage	VOH		90% VDD min	
	VOL		10% VDDmax	
	TTL Load		1~10TTL	1~5TTL
Output Load	HCMOS Load		~50M:50pF	~50M:30pF
			~70M:30pF	~150M:15pF
			~150M:15pF	
Start -up Time	Ts		10ms Max	
Pin 1, tri state function			Pin 1=H or open: Output active at pin 5	
			Pin 1=L: High impedance at pin 5	

* Include 25°C tolerance, operating temperature range, input voltage change, aging, load change, shock and vibration

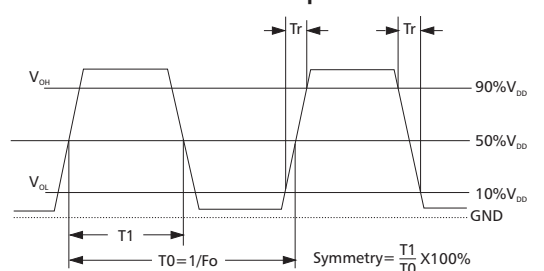
Mechanical Dimensions - mm (inch)



HCMOS Test Circuit



HCMOS Output Waveform



Enable/Disable Function	
Input (Pin1)	Output(Pin8)
Open	Enable
$V_{IH} \geq 2.2 V_{DC}$	Enable

Pin	Connection
#1	Tri-State/NC
#4	GND
#5	Output
#8	V _{DD}

